

Bainbridge White Core – A Bigger and Better Board

The most effective sheet size

Bainbridge sheet size of 32" x 48" is the most efficient in the industry, helping you to maximise productivity and reduce wastage to the lowest possible level.

The best colour palette

Bainbridge White Core is available in a wide palette of 146 colours with an excellent range of neutrals and mid-tones. We use colour forecasting and trend analysis to ensure we provide you with the leading design choice.

The most versatile range

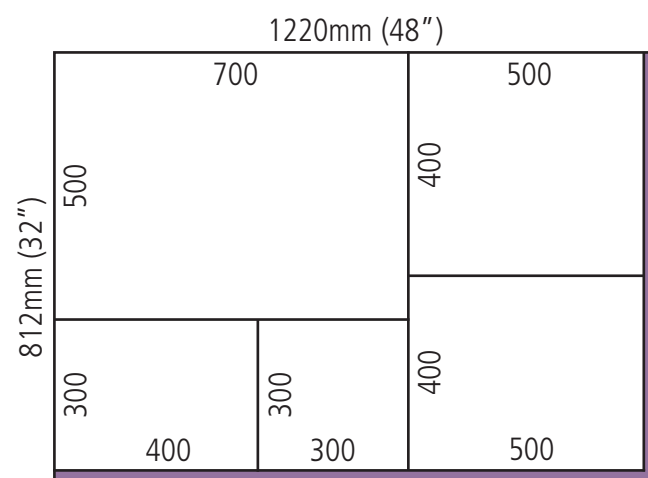
Our 32" x 48" sheet size runs right across the full palette of 146 colours and in addition 22 colours are available in Jumbo format and there is a choice of 9 metallic finishes.

Bainbridge White Core	size imperial	size metric	colours	pack size
Bainbridge White Core	32" x 48"	812 x 1220mm	139	5
Bainbridge White Core Jumbo	40" x 60"	1016 x 1524mm	22	5
Bainbridge White Core Backing 1100 micron	32" x 48"	812 x 1220mm	white	10

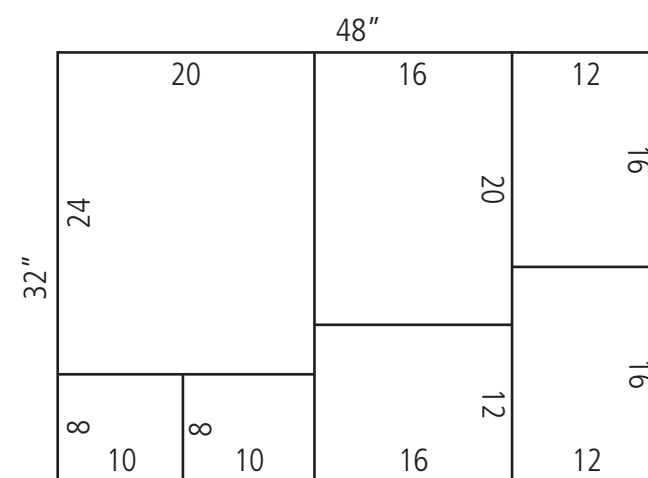
Bainbridge Black Core	size imperial	size metric	colours	pack size
Bainbridge Black Core	32" x 40"	812 x 1016mm	14	5
Bainbridge Black Core Metallics	32" x 40"	812 x 1016mm	2	5
Bainbridge Black Core Jumbo	40" x 60"	1016 x 1524mm	3	5

Bainbridge Black Core – A Great Design Accent

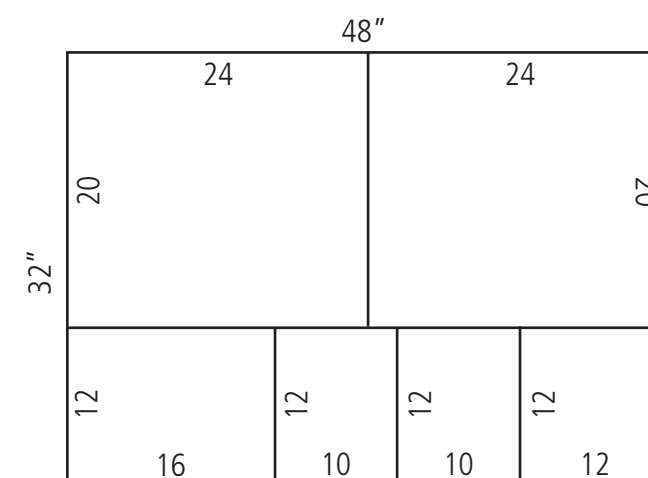
A deep black core gives bevels which help draw the eye into the image and provide an interesting design accent within the mount. Black Core is particularly effective with black & white media, monotone drawings and photography.



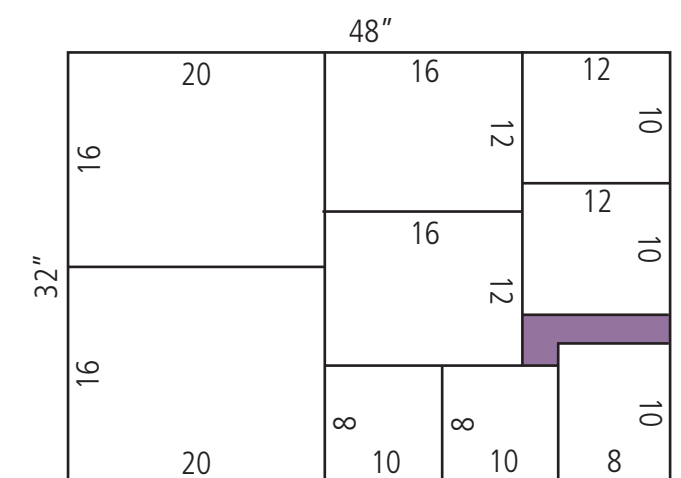
- 1% waste
- 1 @ 50 x 70
- 2 @ 50 x 40
- 1 @ 40 x 30
- 1 @ 30 x 30 sq



- 0% waste
- 1 @ 20 x 24
- 1 @ 20 x 16
- 3 @ 16 x 12
- 2 @ 10 x 8



- 0% waste
- 2 @ 24 x 20
- 1 @ 16 x 12
- 2 @ 12 x 10
- 1 @ 12 x 12



- 2% waste
- 2 @ 20 x 16
- 2 @ 16 x 12
- 2 @ 12 x 10
- 3 @ 10 x 8

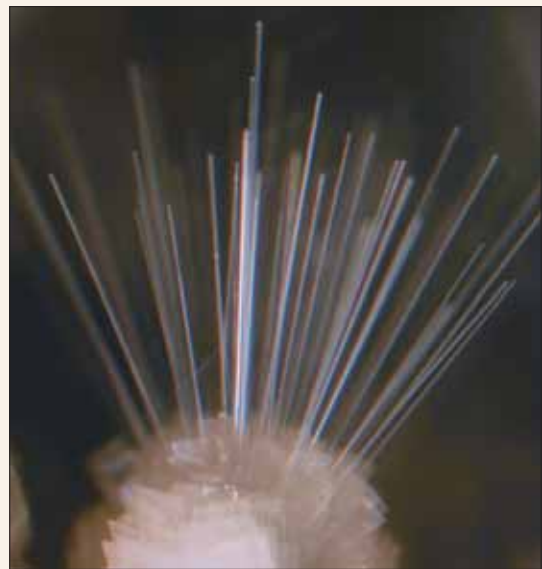
Artcare – “for anyone who cares about customers artwork really there is no excuse not to use Artcare mountboard”



This quote from one of our gallery customers reflects what is now happening in the framing industry with the use of MicroChamber Technology and Bainbridge Artcare Mountboards. It's changing the rules completely on the best materials for framing and the protection of artwork, and setting an entirely new standard for mountboard.

Add Value to Your Framing

Artcare's unique quality gives you a quantifiable advantage over other mountboards and a proven customer benefit, positioning you firmly at the superior and more profitable end of the market; it's a quantum leap in the performance and service you can offer to consumers and in the confidence they can have in your framing and your reputation.



Microchamber Technology

What does it do?

Microchamber technology uses molecular traps or “zeolites” which are naturally occurring minute crystalline structures, like the example shown here magnified many times. They have an almost limitless capacity to absorb and are widely used today in detergents, anti-cancer drugs, water treatment, and air filtration to name just a few uses.

But what is new and is now changing our industry is the incorporation of this technology into paper. In the 1990's a chemist, Bill Hollinger, patented the incorporation of these zeolite molecular traps in the fibres of paper. This created a unique and outstanding new product area: now for the first time paper and board could be made that not only had no acid in it, but much more importantly would trap and render harmless most of the acid gasses in our environment.

For more science background visit www.artcaremountboard.co.uk

How do we know it works?

This new technology has changed best practice completely in the framing industry as Artcare mountboard from Nielsen Bainbridge now has patented custom made zeolites in it's paper fibres.

With Artcare framers now have mountboard that will actively protect the artwork in the frame and significantly extend the life of that artwork. The Microchamber technology in Artcare mountboards has been identified by research institutions such as The Getty etc as the best method for protecting framed artwork.

For more science background visit www.artcaremountboard.co.uk



Framed with Bainbridge Artcare

Actual test showing effect of common indoor airborne pollutants on media framed with Bainbridge Artcare boards



Framed with other mountboard

Actual test showing effect of common indoor airborne pollutants on media framed with ordinary conservation boards



Independently tested and recommended

The products that Bill developed had the most incredible performance results in independent testing, so much so that these MicroChamber paper and board products are now specified by leading museums and collections around the world.

For more science background visit www.artcaremountboard.co.uk

